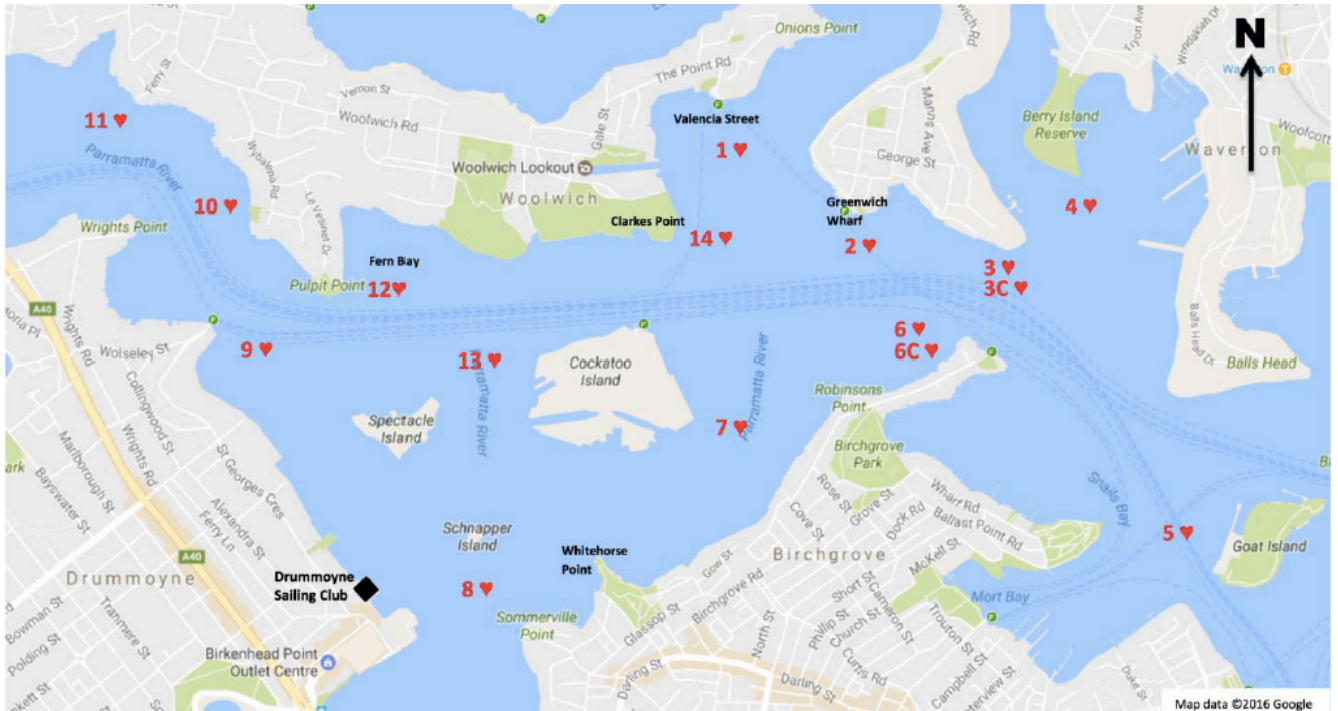




## NSW States Titles Lane Cove and Drummoyne Courses



LONG COURSES			
	Start in the vicinity of:		Finish off:
1. NE	SE of Cockatoo	3 – 13 – 8 – 3 – 8 – 3 – 13 – 8	Whitehorse
2. E	NE of Cockatoo	3 – 3c – 8 – 9 – 3 – 3c – 9 – 3 – 3c – 8	DSC Club
3. SE	Valencia	5 – 4 – 5 – 1 – 5 – 4 – 5 – 1	Robinsons Pt
4. S	Clarkes Pt	Cockatoo – 11 – 8 – Spectacle – 11 – 8 – Spectacle – 11	DSC Club
5. SW	Robinsons Pt	8 – Schnapper – 13 – 3 – 8 – 3 – 8 – 3	Robinsons Pt
6. W	Greenwich Wharf	9 – 13 – Cockatoo – 3 – 9 – 3 – 9	DSC Club

SHORT COURSES			
	Start in the vicinity of:		Finish off:
1. NE	SE of Cockatoo	6 – 13 – 8 – 6 – 7 – 6 – 8	Schnapper
2. E	NE of Cockatoo	6 – 6c – 8 – 5 – 6 – 6c – 14 – 6 – 6c	Schnapper
3. SE	Valencia	5 – 3 – 5 – 3 – 5 – 1	Clarkes Pt
4. S	Clarkes Pt	Cockatoo – 10 – 8 – Spectacle – 10	DSC Club
5. SW	Robinson Pt	8 – Snapper – 13 – 6 – 8 – 6 – 8	DSC Club
6. W	Greenwich Wharf	12 – Cockatoo – 2 – 12 – 2	Fern Bay

Notes: Marks rounding's listed in **green** are to **Starboard** and marks listed in **red** are to **Port**  
 Mark rounding's listed as names (Cockatoo, Spectacle, Schnapper) are **around the Island**